



The MPO is working to improve safety for all walkers, bicyclists and drivers.

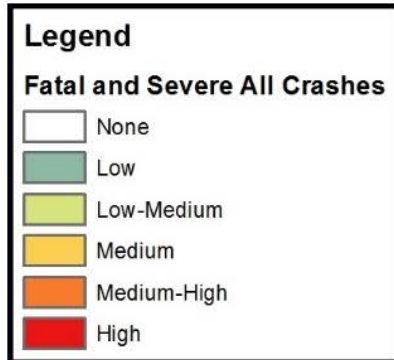
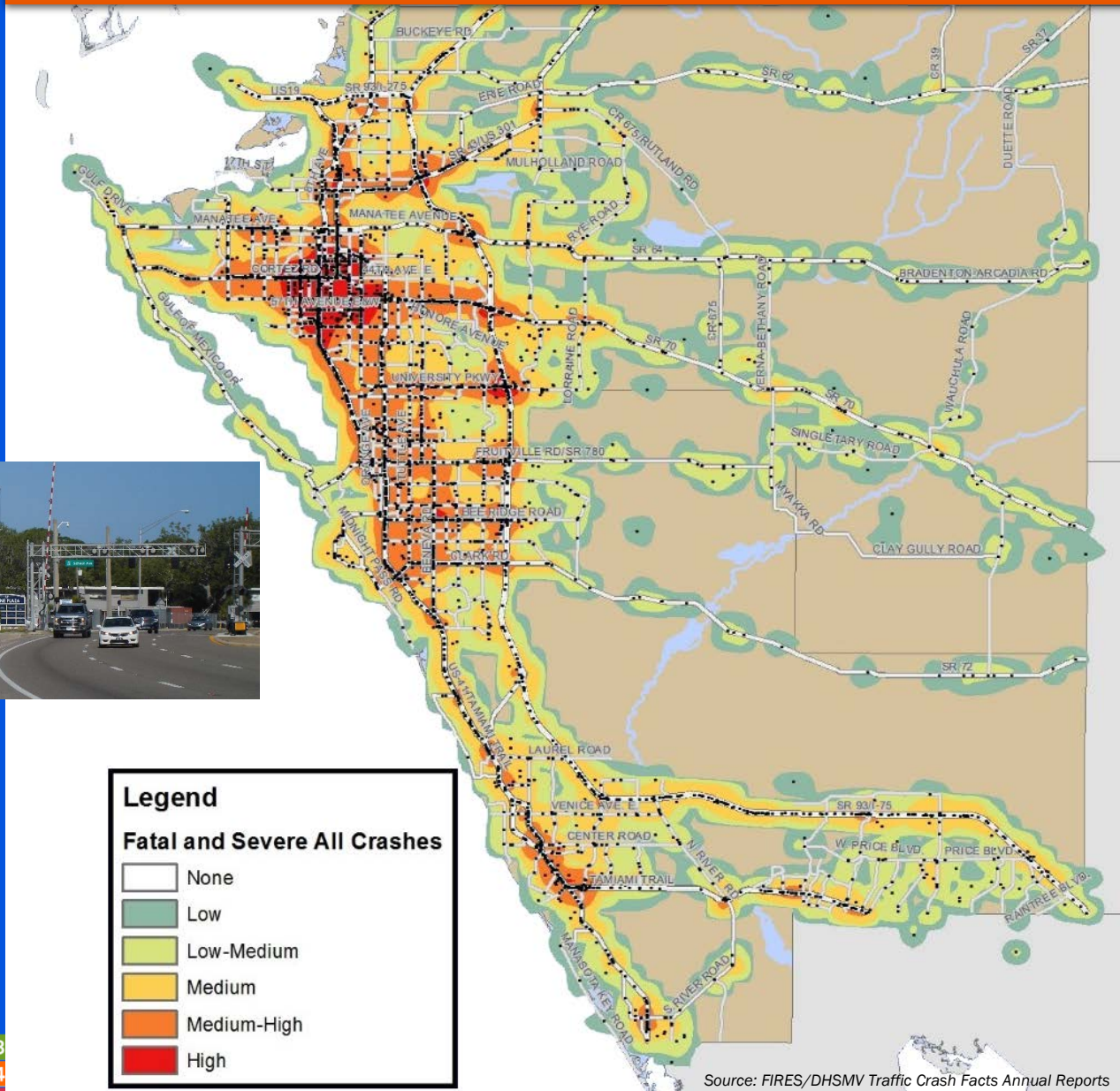
2017 Crash Characteristics



0 DEATHS

The Sarasota/Manatee region can reach zero traffic-related deaths by 2045 if fatalities are reduced by 4 each year.

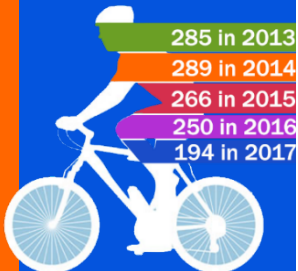
Fatal and Serious Injury Crash Frequency Distribution (2010-2016)



Source: FIRES/DHSMV Traffic Crash Facts Annual Reports



31% decrease in the number of bicycle crashes between 2013 and 2017.



Source: Signal 4 Analytics, 2011-2017

Sarasota/Manatee MPO 5-Year Rolling Average Safety Targets

Performance Measure	2014-2018 Adopted Targets	2018 Actual 5-Year Rolling Averages*	2015-2019 Proposed Targets**
Number of Fatalities	121	108	109
Rate of Fatalities	1.510	1.51	1.630
Number of Serious Injuries	1,540	1,391	1,438
Rate of Serious Injuries	19.366	19.366	21.837
Non-motorized Fatalities and Serious Injuries	199	171	174

*Estimated based on available data through August 2018 and interpolated for 12 months.

**Based on observed crash trends from 2011-2017.

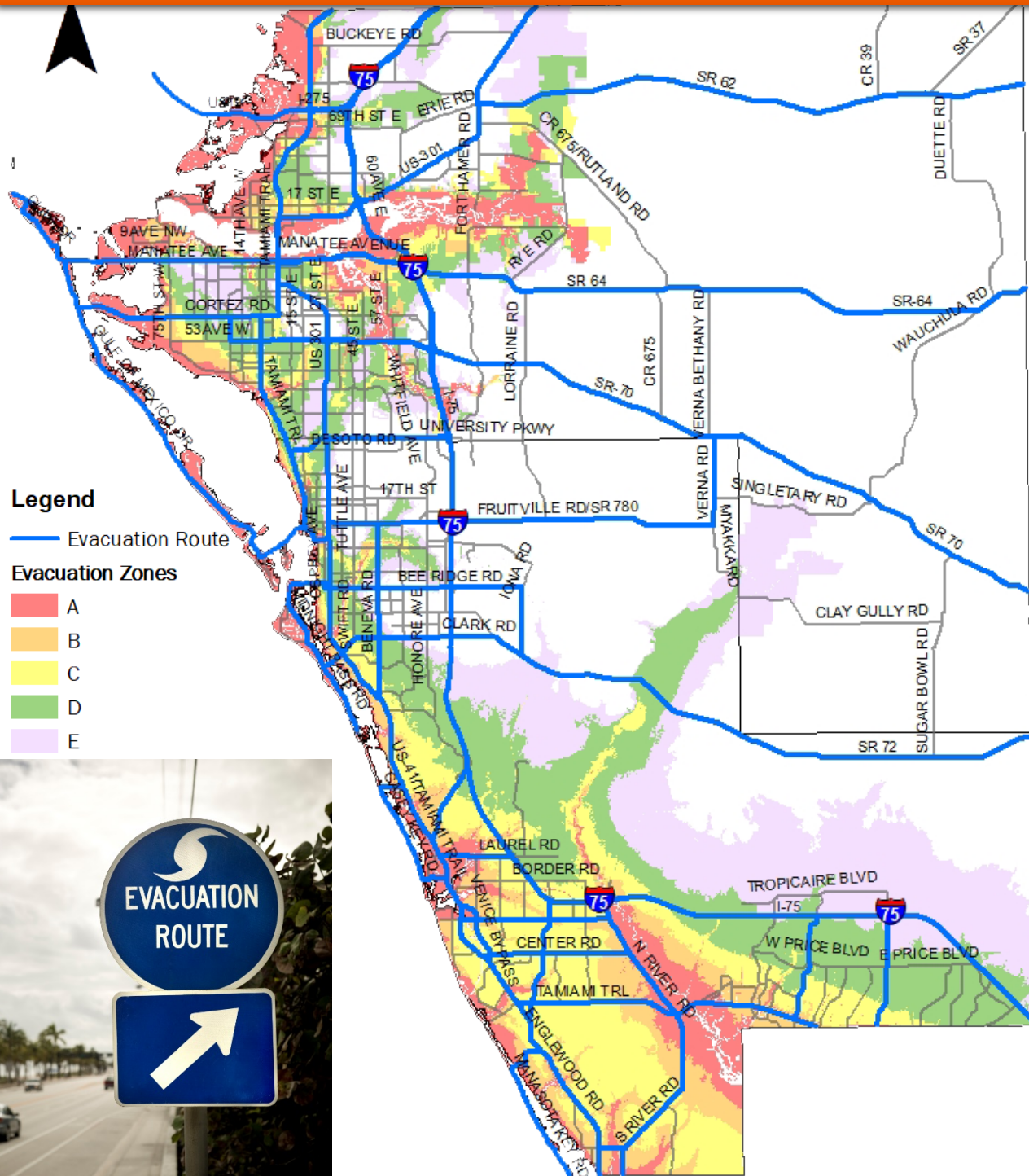
Source: Signal 4 Analytics, 2011-2017



The MPO plans for efficient evacuation and safe returns.

Sarasota/Manatee MPO Flood Zones and Evacuation Routes

54,139 dwellings are in Evacuation Zone A. Dwellings include single family homes, multi family homes, condominiums, mobile homes, orphanages, and homes for older adults.



Sarasota/Manatee
2040 Long Range Transportation Plan

- Improve the safety and security of the transportation system for all users.

Federal Highway Administration
Map 21/Fast Act

- Significant reduction in traffic fatalities and serious injuries on all public roads.

Visit www.mympo.org to view: *2018 Safety Assessment Report* and *2018 Security Assessment Report*