



Health Links:

# Manatee County's Solution to Addressing Adulthood Obesity and Sedentariness



# Manatee County: Adult Overweight and Obesity

61.9% of Manatee  
County adults are  
overweight or obese

Data source: 2013 Florida Behavioral Risk  
Factor Surveillance System (BRFSS)

22.6% of Manatee  
County adults are  
sedentary

Data source: 2013 Florida Behavioral Risk  
Factor Surveillance System (BRFSS)



# About Health Links Florida



About

Get Going

Community

Resource Center

Success Stories

Support



## The Florida Community

Select a Community

SELECT A STATE

Overview

Partners / Sponsors

News and Events

Certified Businesses

Application

Contact

The Florida Department of Health in Manatee County is proud to bring together key community partners in a collective effort to improve the health and wellbeing of our local workforce, while creating an overall culture of health in Manatee. DOH-Manatee, in partnership with the Manatee County Chamber of Commerce, Blake Medical Center, and Health Links at the Colorado School of Public Health, is offering Healthy Business Certification to support local businesses that offer their employees' health and wellness

## Partners Spotlight



# Mission

We collaborate with employers to build a culture of health and safety in the workplace.

Assess

Advise

Connect

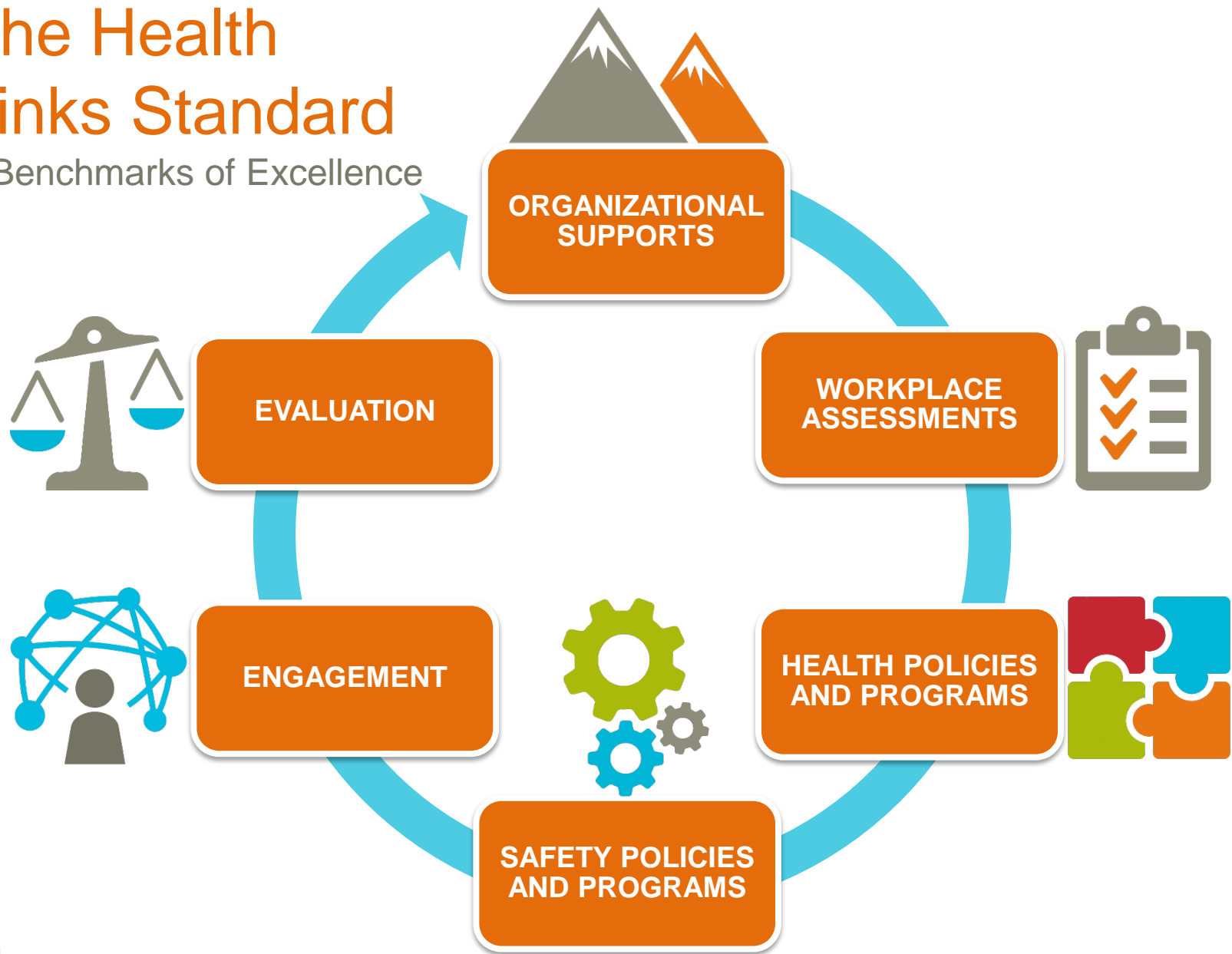


RECOGNIZE



# The Health Links Standard

6 Benchmarks of Excellence



# Healthy Business Recognition Levels



Want to learn more. Go to [www.healthlinkscertified.org](http://www.healthlinkscertified.org) for more information about Health Links!

